

OptoBERT™ OPG6250

6.25 Gbps Data Pattern Generator



Overview

The OPTELLENT OPG6250 is a cost-effective easy-to-use 6.25G data pattern generator (PPG) for testing components and systems in R&D and manufacturing environments as well as field installations. The OPG6250 is offered with electrical and an optional optical port. The OPG6250 generates multiple PRBS patterns, popular stress patterns, and user-defined patterns using an internal clock source. The OPG6250 comes with a standard 2-year warranty.

An intuitive Graphical User Interface enables easy point-and-click operation. The Optellent OPG6250 software runs on Windows 98/2000/NT/XP and VISTA over USB or RS-232 serial interface via an RJ-45 Connector provided on the front panel.

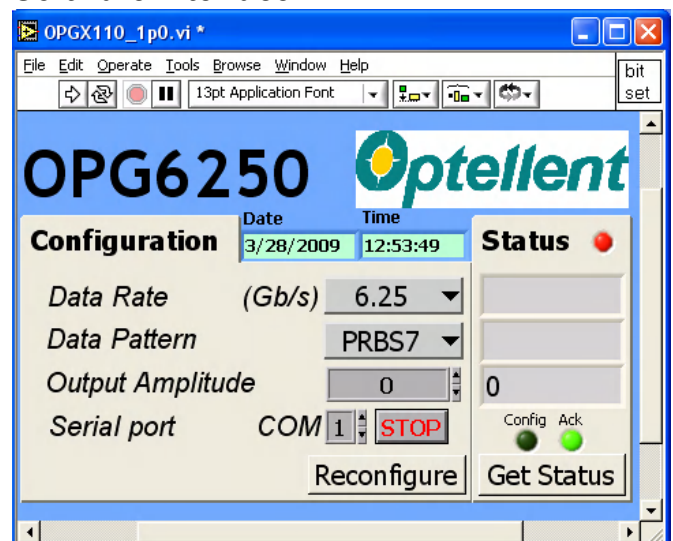
Applications

- ▶ Testing of optical transceivers, transponders, linecards, and subsystems
- ▶ Testing of opto-electronic components and devices (TOSA, ROSA, lasers, etc...)
- ▶ Testing of Gb/s ICs, electronic modules, subsystems, and systems
- ▶ Serial bus design and high-speed backplane design
- ▶ Compliance testing (EMI, EMC)
- ▶ Installation testing and troubleshooting in optical transport networks

Key Features

- ▶ Differential Data and Clock Outputs
- ▶ Multiple PRBS Patterns: 2^7-1 , $2^{23}-1$, $2^{31}-1$
- ▶ Stress Patterns: K28.5, CJPAT, CRPAT
- ▶ User-defined Patterns
- ▶ Low frequency trigger output
- ▶ Intuitive GUI

Software Interface



Specifications

Parameter	Min	Typ	Max	Units
Data Output				
Output Type	AC-coupled, Differential			
Output Format	NRZ			
Data Patterns	<ul style="list-style-type: none"> • PRBS: 2⁷-1, 2²³-1, 2³¹-1; 101010...pattern • Pre-defined: K28.5, CJPAT, CRPAT (Optional) • User-defined: 128 bits to 2000 bits (Optional) 			
Output Amplitude (Single-ended)		300	500	mV
Data Rise/Fall Time, (20 – 80%) ⁽¹⁾		25		ps
Data Output RMS Jitter ⁽¹⁾		2		ps
Error Injection	Single error; 10 ⁻⁷ , 10 ⁻⁸ , 10 ⁻⁹			
Clock Output				
Output Type	AC-coupled, Differential			
Output Amplitude (peak-to-peak, S.E.)		200		mV _{p-p}
Frequency	5		6.25	GHz
Trigger Output				
Output Amplitude	300			mV _{p-p}
Output Type	AC-coupled, Single-ended			
Electrical connectors	50Ω SMA Female			

(1) Measurements based on PRBS2²³-1 data at 6.25 Gbps

Specifications are subject to change without notice. OptoBERT™ is a registered trademark of Optellent, Inc. © 2012 OPTELLENT Inc.

System & General Specifications

PARAMETER	MIN	MAX	UNIT
Chassis Electrical Voltage	100	240	VAC
Current Drain at Normal Voltage		2.5	A
Operating Temperature Range	5	45	°C
Storage Temperature Range	-40	70	°C
Dimensions (L x W x H)	300 x 240 x 64 12 x 9.5 x 2.5		mm ³ inch ³
Optical Interface (optional)	Standard SFP+ housing		
PC Interface	RS232		
Standard Warranty	2 years		

Ordering Information

OPG6250-X-X- X

- X: other Custom Options
- 0: No Optical Transceiver;
- 1: Optical Transceiver (SFP+) 850nm
- 2: Optical Transceiver (SFP+) 1310nm
- 3: Optical Transceiver (SFP+) 1550nm
- P: Preset Standard Data Rates
- C: Custom Data Rates
- V: Variable Data Rate

Accessories Included

- User Software
- User Manual
- Power cord
- PC Interface cable